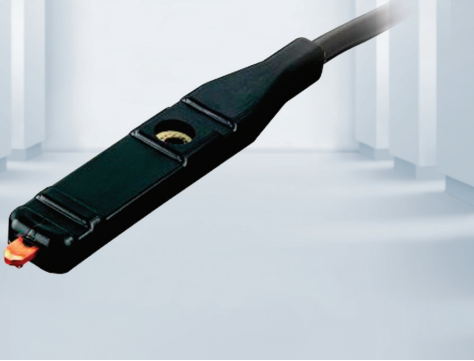
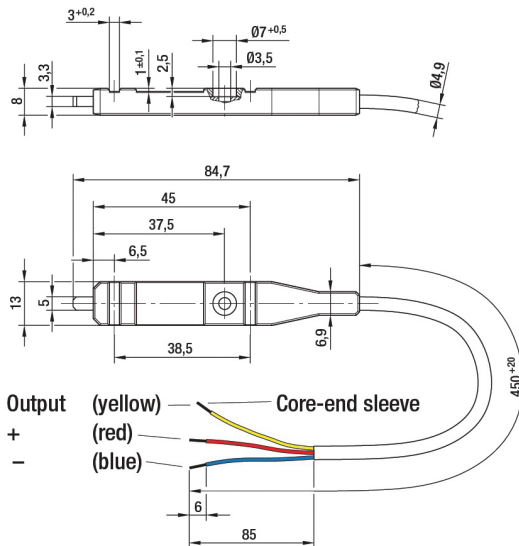


# Temperature Control Module

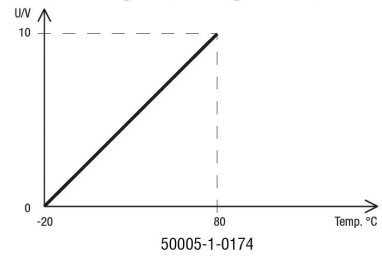
Two temperature sensors with differing profiles allow users to vary the speed of EC by temperature. Each sensor will operate from the 10V output of EC fans. The modules are supplied in a self contained, slim lined over moulded body that allows for easy installation.



Part Number	Supply Voltage		Current Draw		Output Voltage		Output Current		Output Impedance		Ambient Temperature		Mass
	VDC	mA	VDC	mA	VDC	mA	kΩ	°C					
50002-1-0174	18-60	10	2-10	0.1	6.8	+30... +55	0.02						
50003-1-0174	18-60	10	0-10	0.1	6.8	+10... +45	0.02						
50005-1-0174	15-30	10	0-10	1.0	1.1	-20... +80	0.02						



Output voltage depending on temperature:



Control function: Both designs operate in cooling mode

